

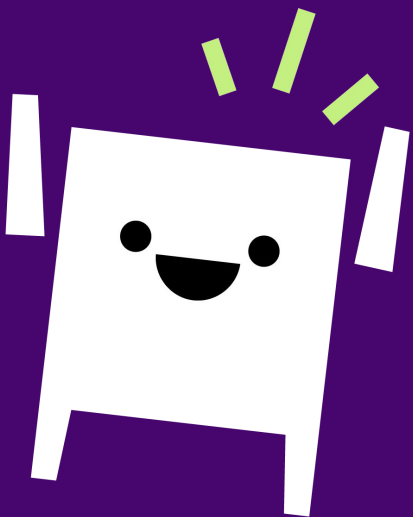


Itä-Suomen yliopiston ylioppilaskunta



Election info

23.9.2025



What is the Representative Council?

- The Representative Council is the Student Union of the University of Eastern Finland's (so ISYY's) highest decision making body
- Decides how much the membership fee is and how it is used
 - Now it's 73 euros, what will it be in the future?
 - With it now you get: advocacy, rentable spaces, events, counselling/assistance, loanable sport equipment/board games etc. → What would you like to have?
- Being a Representative is “training politics”
 - Processes are very similar to, for example, how a local council works

What are the Representative Council Elections?

- 39 representatives are chosen via elections every 2 years and the Representative Council appoints the Executive Board
- Every ISYY member who has registered as present at UEF is eligible to be a candidate at the elections
- To become a candidate, you need to represent a candidate list
- On ISYY's website, there are the already established candidate lists' representatives' contact info → if you can't find a list you like, you should establish your own list!

Why should you become a candidate?

- Good experience on how political processes work
- Looks good on your CV
- You get to know new people from different fields of study
- A group retreat after the elections and a little money to spend for bonding with people from your list
- You get to make changes that you can see in action
- Academic year's kick-off events, May Day (vappu) week, Coffee & Friends hangouts... What would you like to see?

How do you become a candidate?

- Log onto isyy-vaalit.uef.fi with your UEF credentials
- Click “become a candidate”
- Pick a candidate list
- Add your picture on the form (if you want)
- Fill out the consent form and click “send”
- You will get an email once you have been approved as candidate

Easy breezy!

How do you create a candidate list?

- Log onto isyy-vaalit.uef.fi with your UEF credentials
- Click “create a new candidate list”
- Fill out the registration form, save the info, and the list is created!
- ISYY adds the information about new lists during office hours to ISYY’s website
- Advertise your list and campaign to get candidates
- Verify new candidates/not verify them

Paper forms

- It's possible to enter the Representative Council Elections on paper
- You can either establish a candidate list and/or become a candidate on a paper form
- Electoral alliance is only established on a paper form
- You can get the forms from ISYY offices during opening hours OR you can print them from the ["Election documents" -page](#)
- Please note that both the list establishment form and the candidate form need to have the signature of the list's representative before it's brought to the office
- Please bring the forms in good time before the nomination of candidates closes (1.10.2025 at 3 pm)

Why you should vote in the Representative Council Elections

- The decisions of the Representative Council affect your everyday life as a student → make a stand!
- Do you want more games to ISYY's offices or are you annoyed by Wiikko-Ärsyke newsletter? → You can affect the change!
- Voting is super easy, just log onto isyy-vaalit.uef.fi with your UEF credentials, pick a candidate and cast your vote!
- If you don't cast your own vote, someone else will

Representative for a candidate list's info package in a nutshell...

ISYY has organised opportunities for the candidates to campaign:

- Campaigning days in Snellmania and Carelia and also Natura and Canthia
- Election panels on both campuses
- Noticeboards for promoting the candidate lists, in Kuopio; Snellmania and Canthia, in Joensuu: Agora, Aurora, Carelia, Educa, Futura, Metria, Natura
 - obs. please take into account [the guidelines for election advertising](#) → only poster/posters the size of A3 to the boards

Representative for a Candidate list's info package has been sent by email to the list Representatives and you can also [find it on the ISYY website](#).



Some important dates...

- Candidate applications must be submitted by 1.10.2025 by 3 pm
- Announcing the candidates on the website and their candidate numbers 7.10.
- Voting aid will open for candidates on 13.10.2025
- The candidates may answer to the questions in the Voting Aid provided by SYL 19.10.2025 (by 23:59 at midnight)
- Voting aid will open for ISYY members on 20.10.2025
- Advance voting 27.-31.10.2025
- Actual election day 6.11.2025
- Election night 6.11.2025

Campaigning

Joensuu

- Tue 23.9.2025 from 10 am to 2 pm, Carelia lobby
- Thu 25.9.2025 from 10 am to 2 pm, Natura lobby
- Mon 29.9.2025 from 10 am to 2 pm, Carelia lobby
- Tue-Thu 14.-16.10.2025, from 10 am to 2 pm, Carelia lobby
- Mon 20.10.2025, from 10 am to 2 pm, Carelia lobby
- Mon-Wed 27.-29.10.2025, from 10 am to 2 pm, Carelia lobby
- Thu-Fri 30.-31.10.2025, from 10 am to 2 pm, Natura lobby
- Tue-Wed 4.-6.11.2025, klo 10-14, from 10 am to 2 pm, Carelia lobby

Kuopio

- Tue 23.9.2025, from 10 am to 2 pm, Snellmania lobby (1st floor)
- Thu 25.9.2025 klo, from 10 am to 2 pm, Canthia lobby
- Mon 29.9.2025, from 10 am to 2 pm, Snellmania lobby (1st floor)
- Tue-Thu 14.-16.10.2025, from 10 am to 2 pm, Snellmania first floor lobby
- Tue 21.10.2025, from 10 am to 2 pm, Snellmania first floor lobby
- Mon-Wed 27.-29.10.2025, from 10 am to 2 pm, Snellmania first floor lobby
- Thu-Fri 30.-31.10.2025, from 10 am to 2 pm, Canthia first floor lobby
- Tue-Wed 4.-6.11.2025, from 10 am to 2 pm, Snellmania first floor lobby

When and how to vote?

- Every ISYY member who has registered as present at the UEF is eligible to vote
- Voting takes place on ISYY's election system at isyy-vaalit.uef.fi
- Advance voting takes place from 27 to 31 October
 - Voting opens on Monday at 9 am and ends on Friday at 2 pm
- The actual election day is 6 November
 - Voting opens at 8 am and ends at 4 pm

Need more info or help?

**Check out at least ISYY's
election webpage:
isyy.fi/en/isyy-elections**

**Coordinator for the
Representative Council Elections**

Emma Ohtonen

vaalikoordinaattori(at)isyy.fi

+358 44 576 8450

**Coordinator for International
Affairs and Administration**

Elina Pitkänen

kv.kuopio(at)isyy.fi

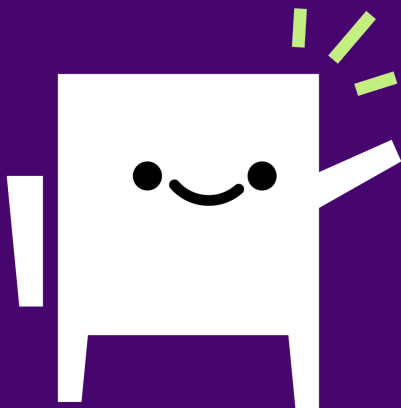
+358 44 576 8413

**Chair for
Central Election Committee**

Julia Lautala

kvl.pj(at)isyy.fi

**Follow
&
contact!**



www.isyy.fi/en



@isyyuef



fbISYY



**Itä-Suomen yliopiston
ylioppilaskunta (ISYY)**

Weekly Feed (campus-specific newsletter)

ISYY offices (contact information on the website)

Some questions from the students...

- What kind of differences are there between working in the Representative Council and the Executive Board?
- What kind of a person suits the Representative work?
- What has been the best part about being in the Representative Council?
- Has being in the Representative Council been somehow beneficial to your studies, if so, how?
- What does a nonaligned candidate mean?