



Itä-Suomen yliopiston ylioppilaskunta

Language Café - info

Autumn semester 2025

Coordinators of International Affairs

Contents

- What is a Language Café?
- How it works?
- How to earn ECTS points?
- Signing up



**Which
language
would you
like to learn
or teach?**

**Write in the
chat!**



What are Language Cafés?

- Informal language classes taught by students for students
- Gives students an opportunity to
 - a) learn a language they are interested in in a relaxed and friendly environment
 - b) get experience in teaching a language
- You can teach your own Language Café and/or be a participant of another Café (= you can sign up to all the Cafés you want!)
- Language Café leader decides
 - the language they want to teach
 - if the Café is online or on campus
 - if the Language Café offers ECTS credits (UEF students)
 - If teacher chooses to get 2 ECTS credits themselves, participants have the opportunity to get 1 ECTS credit
 - NOTE! If the teacher does not want ECTS credits, there is no possibility for a participant to get them either
- You can attend the Language Cafés even if you don't want to earn ECTS credits – so it's just for fun!



How do the Cafés work?

- Normally meetings once a week
 - Time and day decided by each individual Language Café
- First meeting = planning meeting
- Themes of the cafés are decided together with the participants and the leader
- Content is created by the leader based on participants' wishes. NB! There is no ready-made material for teachers
- ISYY offers **25 €/ leader** so that leaders can organise e.g. a baking lesson (only the Cafés that offer ECTS credits)





HOW TO EARN ECTS CREDITS?

Two Language Café Courses in eLearn Moodle

- Language Cafe Participant (Autumn 2025)
 - Moodle course key: **PART-A25**
 - Peppi: 8015309 Language Cafe, participant
 - 1 ECTS (UEF students only)
- Language Cafe Leader (Autumn 2025)
 - Moodle course key: **LEADER-A25**
 - Peppi: 1131019 Language Cafe, leader
 - 2 ECTS (UEF students only)



- Sign up in Moodle if you want credits!
- **NB!** You can only get ECTS points if you are a UEF student
- You can only get the ECTS points once, i.e. if you got 2 ECTS for leading a Café last semester you can not get another 2 ECTS this semester for leading another Language Café



Participants

8015309 Language Cafe, participant, 1 ECTS

- Aim: when participating in international Language Cafe activities, the student
 - develops their language skills together with other participants in line with a self-defined starting point and goals
 - learns about different cultures and customs
 - acquires skills in performing within a multicultural group
- Content: the Language Café leader prepares the course themes together with the participants
- Evaluation criteria: pass-fail
- Time estimate for the credit:
 - 20 hours of attending Language Café meetings
 - 7 hours of independent study and writing a learning diary

NOTE! Submitting the required assignments is done via elearn Moodle platform.

Requirements for 1 ECTS credit:

- ❑ Participate in the Language Café meetings (20 h)
80% attendance requirement (min 16 h)
- ❑ Submit personal learning objectives **by 12.10.**
- ❑ Write and submit a learning diary (2 pages) **by 14.12.**

Personal Learning Objectives

- Maximum length 1 page, spacing 1,5 and font 12.
- You can use the following questions when writing
 - What would you like to learn? Vocabulary of certain themes, grammar, cultural aspects, pronunciation etc.
 - What is your starting point?
 - How would you like to improve your language skills during the Café? What is your goal?

Leaders

1131019 Language Cafe, leader, 2 ECTS

- Aim: to learn about
 - international language cafe activities
 - peer learning and teaching
 - how to take responsibility for leading, planning and coordinating language cafe activities
 - developing multicultural group work skills
- Evaluation criteria: pass-fail
- Content:
 - The Language Café leader decides the meetings' themes together with the participants
 - The leader creates the content based on the wishes of the participants and based on the participants' learning objectives (discussed in the first meeting)

1131019 Language Cafe, leader, 2 ECTS

- Time estimate:
 - 20 hours of planning the meetings, preparing content and communications
 - 20 hours of leading Language Café meetings
 - 14 hours for assignments

NOTE! Submitting assignments is carried out via the eLearn Moodle course.

Requirements for 2 ECTS credits:

- ❑ Participate in Leader Training tomorrow 18.9. at 9am
- ❑ Confirm being a leader by filling in a form on [ISYY's website](#) by 21.9.
- ❑ Submit a course plan by 12.10.
- ❑ Plan Language Café activities
- ❑ Teach 20h
- ❑ Submit participants' attendance record and ECTS grant form by 31.12.
- ❑ Write and submit your own learning diary (2 pages) by 31.12.

Learning Diary


- Helps you to become more conscious of your learning – what you have learnt and how you have progressed.
- It is a "learning tool". Reflects on significant experiences associated with your learning – what was particularly interesting/motivating/relevant/confusing/difficult, etc.? Develops your argumentation skills.
(source: <https://www.uef.fi/web/resourceslaw/study-methods>)
- A learning diary should not be a copy of the course plan or the personal learning objectives



Learning Diary

A suitable length for a learning diary is two (2) full pages of your own text with 1.5 line spacing and 12 pt font.

Please use the following list as a basis for your learning diary:

- 1) Your name and study right number
 - 2) Language Café you participated in/Language Café you taught
 - 3) Language Café period
 - 4) Your expectations for the Language Café and how they were fulfilled
 - 5) The content and activities of the Language Café
 - 6) The essential learning experiences
 - a) What (new) did you learn?
 - b) Which of it was useful and which not so useful?
 - c) What kind of observations did you make of yourself as a learner/teacher and how did your learning/teaching/language skills improve?
 - 7) Feedback
- 



HOW TO SIGN UP?

Sign up as a Language Café leader

1. Participate in Leader Training which is held tomorrow **Thu 18.1. at 9 am** (online)
 - Leader Training is mandatory for all leaders, but attending the training does not bind you to anything! You have until **Sun 21.9.** to make the final decision if you want to teach a Language Café or not
 - If you cannot make it to the training session, contact International Coordinators
2. Confirm being a leader by filling in a form on [ISYY's website](#) by **Sun 21.9.**
3. Participants can join your Language Café by filling in a sign-up form on ISYY's website **Mon 22.9. – Sun 28.9.**
 - Participants' email addresses are forwarded to the Language Café leader **on Mon 29.9.** – now you can start to plan the first meeting with your students!

How to become a Language Café participant

1. Available Language Cafés will be added to [ISYY's website](#) on **Mon 22.9.**
2. Join the Language Café(s) of your choice by filling in a sign-up form on ISYY's website **Mon 22.9. – Sun 28.9. (midnight)**
 - You can join as many Language Cafés as you wish!
 - Your email will be forwarded to the Language Café leader, and they will contact you about the first meeting

Deadlines for leaders

- **21.9.** Confirm being a leader
- **12.10.** Course plan
- **31.12.** Learning diary, attendance records and ECTS grant form

Deadlines for students

- **22.9.-28.9.** Sign up to Language Café(s)
- **12.10.** Student's personal learning objectives
- **14.12.** Learning diaries

Moodle

Course keys to enroll to Moodle courses:

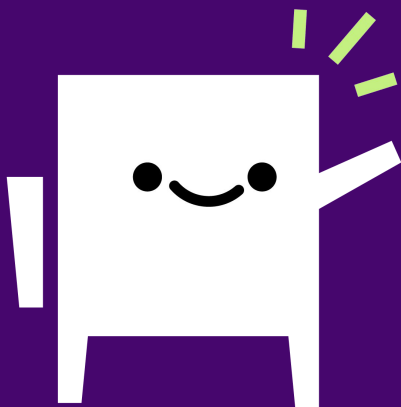
- Leaders: **LEADER-A25**
- Participants:
- **PART-A25**
- Instructions, presentations, forms, assignment submissions

Questions?

- All the instructions are in Moodle!
- If the information you require wasn't in Moodle, you can contact either of the International Coordinators by email:
 - kv.kuopio@isyy.fi
 - kv.joensuu@isyy.fi
- Participants ECTS questions:
 - Irene Hall, ihall@uef.fi
- Leaders ECTS questions:
 - kv.joensuu@isyy.fi or kv.kuopio@isyy.fi



**Follow
&
contact!**



www.isyy.fi/en



@isyyuef



fbISYY



**Itä-Suomen yliopiston
ylioppilaskunta (ISYY)**

Weekly Feed (campus-specific newsletter)

ISYY offices (contact information on the website)