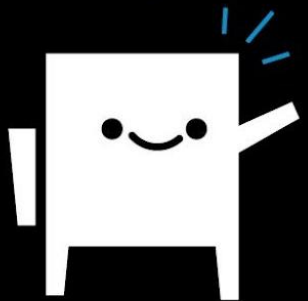


Language Café - info

Spring semester 2024



Elina Pitkänen & Salla Haapavaara
Coordinators of International Affairs



Contents

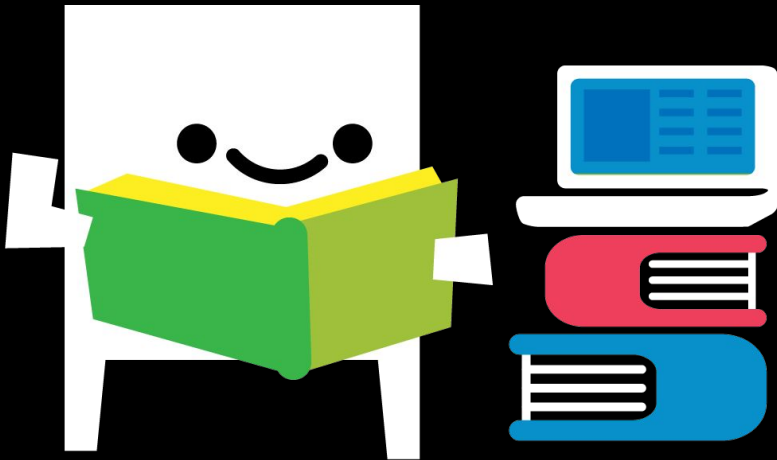
- **What is a Language Café?**
- **How it works?**
- **How to earn ECTS points?**
- **Signing up**




What is a Language Café?

You can be a student or a leader (or both)

- It is an informal language class taught by students for students
 - Volunteer work
- Gives students an opportunity to learn a language they are interested in in a relaxed and friendly environment
- Possibility to earn ECTS credits by teaching or participating (UEF students)
 - NOTE! If the teacher does not want ECTS credits, there is no possibility for a participant to get them either



How to get started as a leader

1. Sign up to Leader Training by **Mon 22.1 3pm**
 2. Participate in Leader Training which is held on **Tue 23.1. at 9 am** (online)
 - Leader Training does not bind you to anything! You can decide after the training whether you want to teach a Language Café
 3. After the Leader Training, you have until **Sun 28.1** to make the final decision if you want to teach a Language Café or not
 4. Participants can join your Language Café by filling in a sign-up form on ISYY's website
 - Participants' email addresses are forwarded to the Language Café leader **on 2.2.** - now you can start to plan the first meeting with your students!
- 

*How to get started as a **participant?***

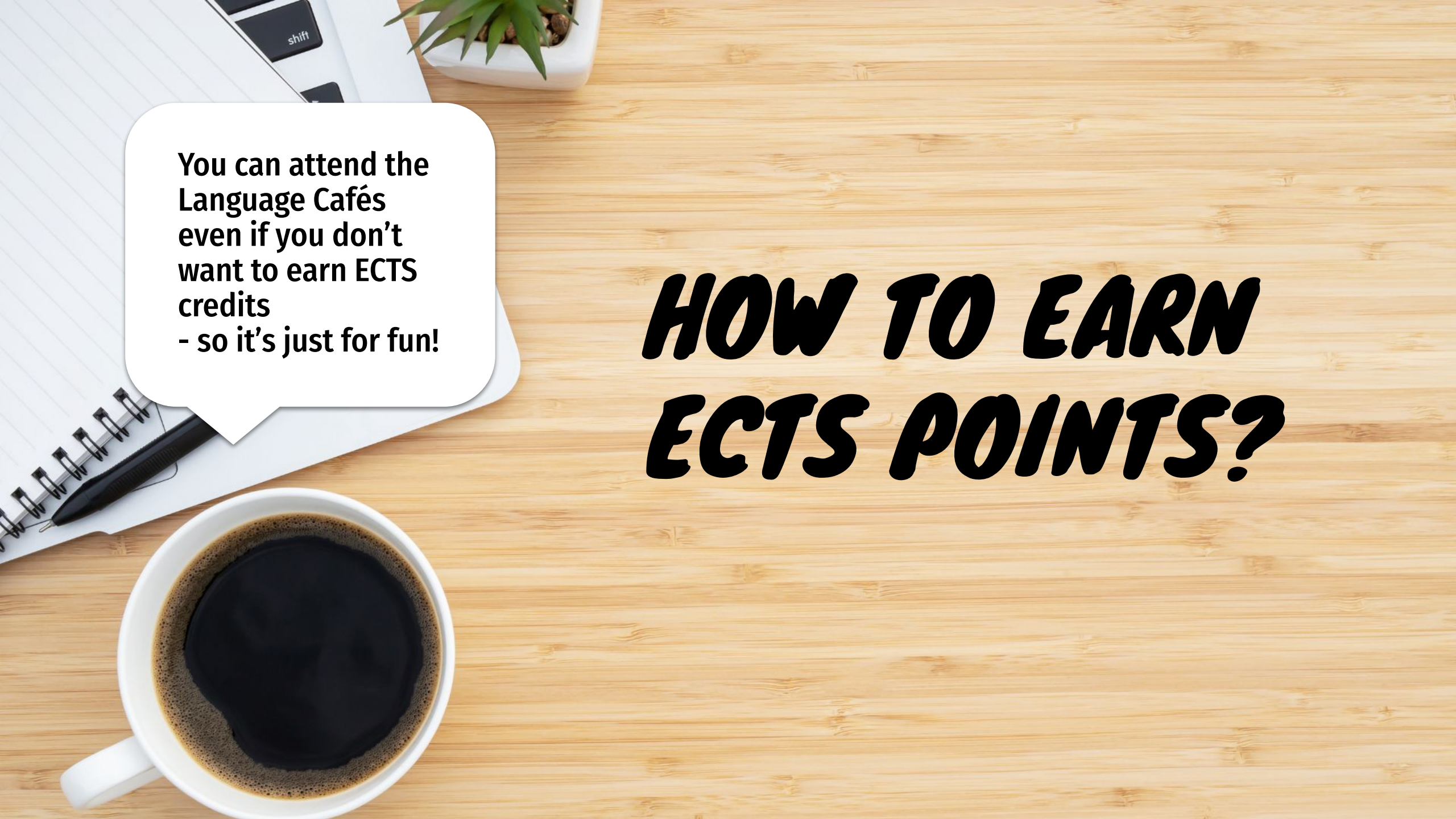
- Available Language Cafés will be added to ISYY's website on Mon **29 January**
 - <https://www.isyy.fi/en/recreation/language-cafes-2.html>
- Join the Language Café(s) of your choice by filling in a sign-up form on ISYY's website **by Fri 2 February noon (12 pm)**
 - You can join as many Language Cafés as you wish!





How do the Cafés work?

- Normally meetings once a week
- First meeting = planning meeting
- Time and day decided by each individual Language Café
- Themes of the cafés are decided together with the participants and the leader
- Content is created by the leader based on participants' wishes. NB! There is no ready-made material for teachers
- ISYY offers **25 €/ leader** so that leaders can organise e.g. a baking lesson



You can attend the
Language Cafés
even if you don't
want to earn ECTS
credits
- so it's just for fun!

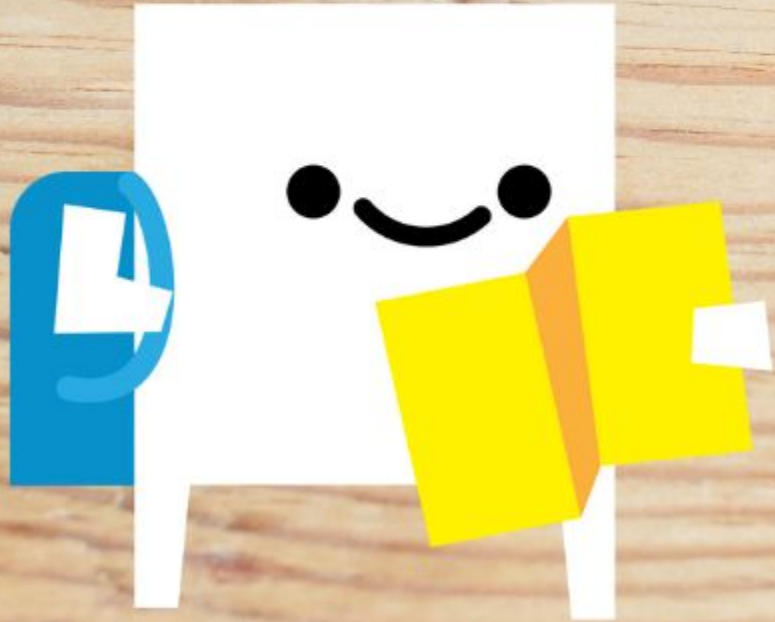
HOW TO EARN ECTS POINTS?

Two Language Café Courses in eLearn Moodle

- **Language Cafe Participant**
- Moodle course key: **PART-2023**
- Peppi: 8015309 Language Cafe, participant -> course description
- 1 ECTS (UEF students only)

- **Language Cafe Leader**
- Moodle course key: **LEADER-2023**
- Peppi: 1131019 Language Cafe, leader -> course description
- 2 ECTS (UEF students only)





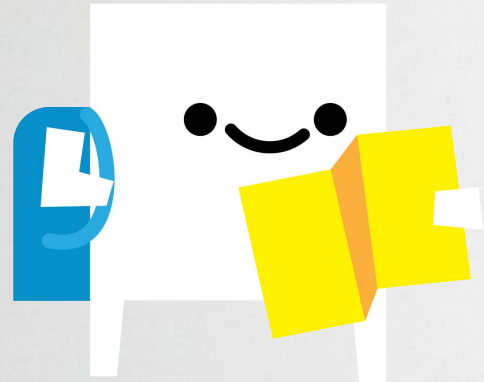
Participants

8015309 Language Cafe, participant, 1 ECTS

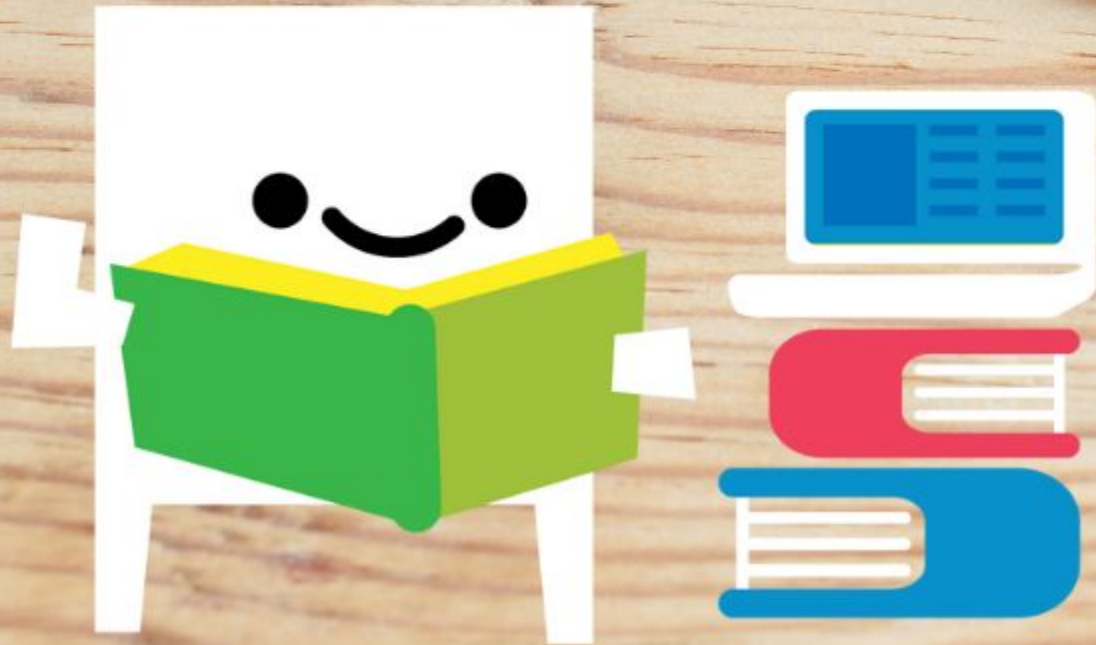
- **Aim:** when participating in international Language Cafe activities, the student
 - develops their language skills together with other participants in line with a self-defined starting point and goals
 - learns about different cultures and customs
 - acquires skills in performing within a multicultural group
- **Content:** the Language Café leader prepares the course themes together with the participants
- **Evaluation criteria:** pass-fail
- **Time estimate for the credit:**
 - 20 hours of attending Language Café meetings
 - 7 hours of independent study and writing a learning diary
- **NOTE!** Submitting the required assignments is done via elearn Moodle platform.

Requirements for 1 ECTS credit:

Remember to sign up to all Language Cafés you want to participate in!



- ☐ Participate in the Language Café meetings (20 h), 80% attendance requirement (min 16 h)
- ☐ Submit personal learning objectives by **18.2.**
- ☐ Write and submit a learning diary (2 pages) by **26.5.**



Leaders

1131019 Language Cafe, leader, 2 ECTS

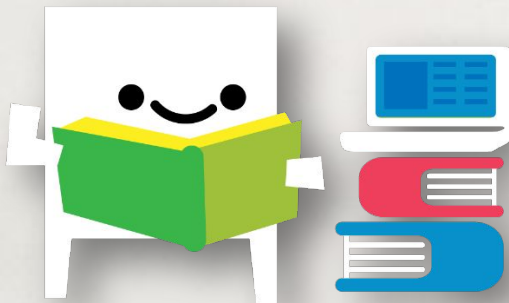
- **Aim:** to learn about
 - international language cafe activities
 - peer learning and teaching
 - how to take responsibility for leading, planning and coordinating language cafe activities
 - developing multicultural group work skills
- **Evaluation criteria:** pass-fail
- **Content:**
 - The Language Café leader decides the meetings' themes together with the participants.
 - The leader creates the content based on the wishes of the participants and based on the participants' learning objectives (discussed in the first meeting)

1131019 Language Cafe, leader, 2 ECTS

- **Time estimate:**
 - 20 hours of planning the meetings, preparing content and communications
 - 20 hours of leading Language Café meetings
 - 14 hours for assignments
- **NOTE! Submitting assignments is carried out via the eLearn Moodle course.**

Requirements for

- ☐ Participate in Leader Training: **23.1. at 9 am**
- ☐ Email International Coordinator to confirm being a leader by **28.1.**
- ☐ Submit a course plan by **18.2.**



2 ECTS credits:

- ☐ Plan Language Café activities
- ☐ Teach 20h
- ☐ Submit participants' attendance record and ECTS grant form by **31.5.**
- ☐ Write and submit your own learning diary (2 pages) by **31.5.**

Learning Diary

- Helps you to become more conscious of your learning – what you have learnt and how you have progressed.
- It is a "learning tool". Reflects on significant experiences associated with your learning – what was particularly interesting/motivating/relevant/confusing/difficult, etc.? Develops your argumentation skills. (source: <https://www.uef.fi/web/resourceslaw/study-methods>)
- A learning diary should not be a copy of the course plan or the personal learning objectives



Learning Diary

A suitable length for a learning diary is two (2) full pages of your own text with 1.5 line spacing and 12 pt font.

• Please use the following list as a basis for your learning diary:

- 1) Name and student number
- 2) Language cafe you participated in/Language café you taught
- 3) Language cafe period
- 4) Your expectations for the language cafe and how they were fulfilled
- 5) The content of the language cafe and the activities
- 6) The essential learning experiences
 - a) What new did you learn?
 - b) Which of it was useful and which not so useful?
 - c) What kind of observations did you make of yourself as a learner/teacher and how did your learning/teaching/language skills improve?
- 7) Feedback



REMEMBER

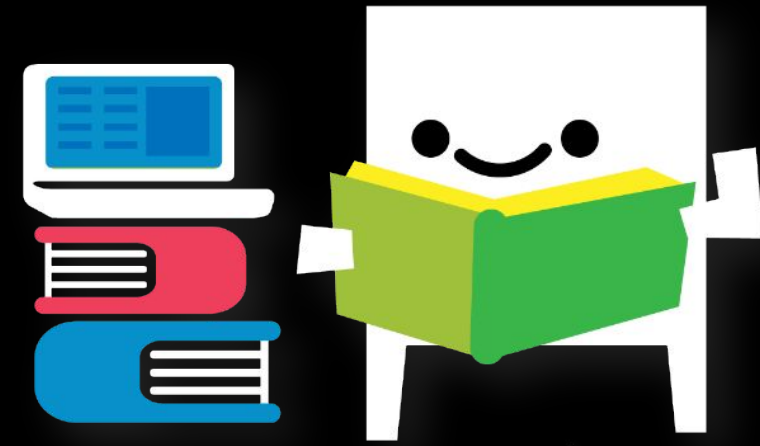
- Sign up in Moodle if you want credits!
- NB! You can only get ECTS points if you are a UEF student
- You can only get the ECTS points once, i.e. if you got 2 ECTS for leading a LC last autumn you can not get another 2 ECTS this spring for leading another LC



Sign up as a leader

Sign up to Leader Training via [Google Forms](#) by
Mon 22.1. 3 pm

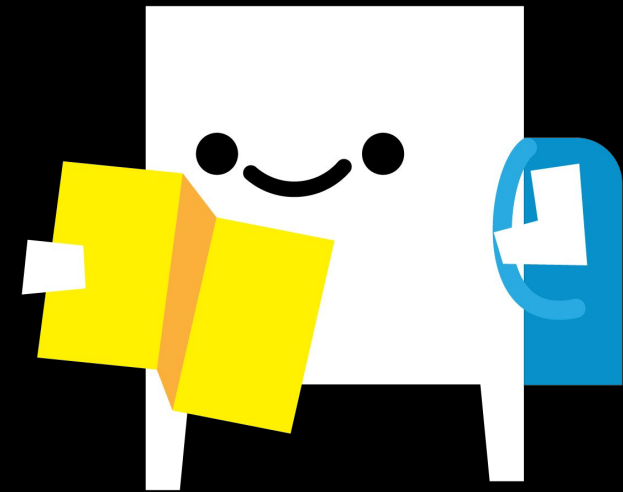
- We will send you a link to Leader Training (held on Tue 23.1. 9 am) by email
- Leader training is mandatory for all Language Café leaders!
- The sign-up and Leader Training are not binding. You have until **Sun 28.1.** to decide whether you want to be a leader or not.



*Sign up as a **participant***

The available Language Cafés will be posted [on our webpage](#) on Mon 29.1.

- In order to join a Language Café, you need to fill in the [sign-up form](#) **by Fri 2.2. 12 pm (noon)**
- You can join as many Language Cafés as you want!
- Your email will be forwarded to the Language Café leader, and they will contact you about the first meeting



Deadlines for leaders

- Email to confirm being a leader **28.1.**
- Course plan **18.2.**
- Learning diary, attendance records and ECTS grant form **31.5.**

Deadlines for students

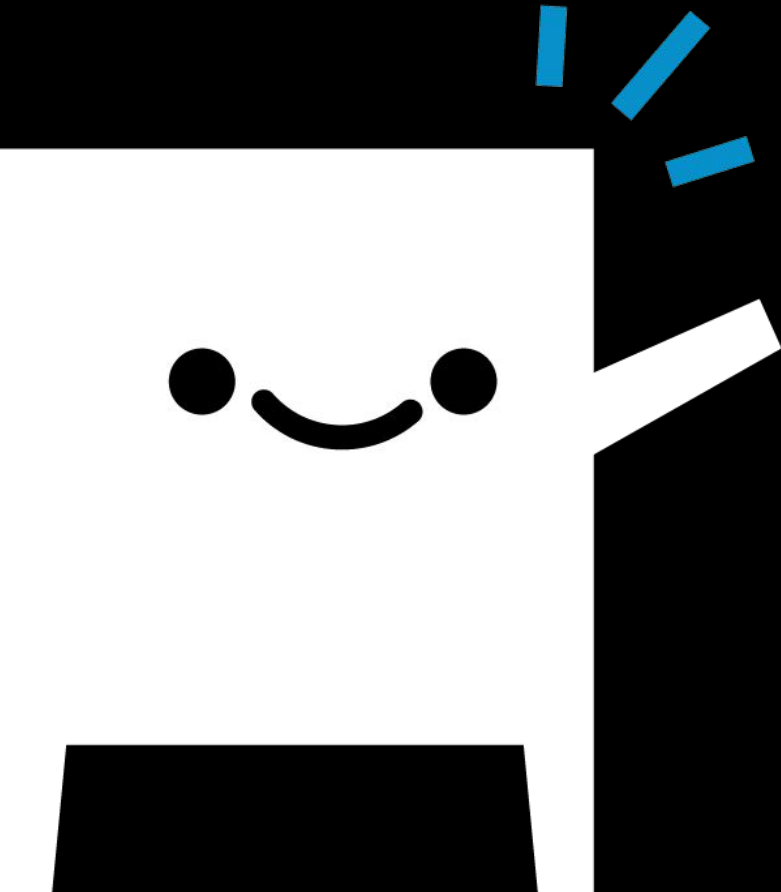
- Sign up to Language Café via form **2.2. 12 pm (noon)**
- Student's personal learning objectives **18.2.**
- Learning diaries **26.5.**

Course keys to enroll to Moodle courses:

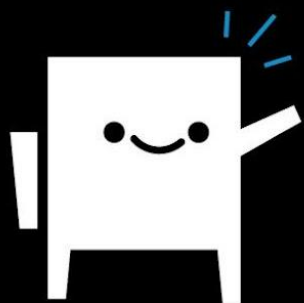
- Leaders: **LEADER-2023**
- Participants: **PART-2023**
- Instructions, presentations and forms
- All assignments submitted via Moodle

QUESTIONS?

- All the instructions are in Moodle!
- If the information you require wasn't in Moodle, you can contact either of the International Coordinators by email:
 - kv.kuopio@isyy.fi
 - kv.joensuu@isyy.fi
- Participants ECTS questions: Irene Hall, ihall@uef.fi
- Leaders ECTS questions: kv.joensuu@isyy.fi or kv.kuopio@isyy.fi



**SEURAA
& OTA
YHTEYTTÄ**



www.isyy.fi



fbISYY



@ISYYH



@isyyuef



**Itä-Suomen
yliopiston
ylioppilaskunta
(ISYY)**

Viikko-Ärsyke (kampuskohtainen uutiskirje)

ISYYn toimistot (yhteystiedot nettisivuilla)